

LENAWEE-LIVINGSTON-MONROE-WASHTENAW
OVERSIGHT POLICY BOARD
VISION

"We envision that our communities have both an awareness of the impact of substance abuse and use, and the ability to embrace wellness, recovery and strive for a greater quality of life."

AGENDA
SEPTEMBER 28, 2017
705 N. Zeeb Road, Ann Arbor
Patrick Barrie Conference Room
9:30 a.m. – 11:30 a.m.

1. **Introductions & Welcome Board Members**– 5 minutes
2. Approval of Agenda (Board Action) – 2 minutes
3. Approval of 7-27-2017 OPB Minutes {Att. #1} (Board Action) – 5 minutes
4. Audience Participation – 3 minutes per person
5. Old Business – 45 minutes
 - a. Finance Report {Att. #2} (Board Action) – 15 minutes
 - b. RFP Funding Recommendations Round 3 {Att. #3} (Board Action) 15 minutes
6. New Business – 30 minutes
 - a. Board Officer Elections
 - b. Draft PA2 policy revision {Att. #4} (Board Action)
7. Report from Regional Board (Discussion) – 5 minutes
8. SUD Director Updates (Discussion) – 10 minutes
 - a. Reports updated indicators {Att. #5}
 - b. State Site Visit
 - c. Provider Desk Audits

Next meeting: October 26, 2017
(Marci will not be available)

Parking Lot:

**LENAWEE-LIVINGSTON-MONROE-WASHTENAW
OVERSIGHT POLICY BOARD
Summary of July 27, 2017 meeting
705 N. Zeeb Road
Ann Arbor, MI 48103**

Members Present: David Oblak, Dianne McCormick, William Green, Tom Waldecker, Dave O'Dell, John Lapham, Susan Webb, Charles Coleman, Amy Fullerton, Blake LaFuente, Mark Cochran

Members Absent: Monique Uzelac, Ralph Tillotson, Kim Comerzan

Guests:

Staff Present: Stephannie Weary, Marci Scalera, Suzanne Stolz, Jane Goerge, Katie Postmus, Anne Marshall, Dana Darrow,

A. D. Oblak called the meeting to order at 9:30 a.m.

1. Introductions
2. Approval of the agenda

**Motion by J. Lapham, supported by M. Cochran, to approve the agenda
Motion carried**

3. Approval of June 22, 2017 OPB minutes

**Motion by J. Lapham, supported by M. Cochran, to approve the June 22, 2017 OPB minutes
Motion carried**

4. Audience Participation
J None

5. Old Business

- a. Finance Report

J S. Stolz presented. Discussion followed.

- b. RFP Funding Recommendations Round 2

J M. Scalera presented the Round 2 recommendations

J Funding decisions go into effect October 1.

J M. Scalera shared the rationale for some of the funding decisions (block grant dollars vs. PA2 dollars being used for funding).

J OPB discussed the arrangement of the Engagement Centers in Washtenaw and the proposed one in Livingston.

J T. Waldecker requested that the PIHP establish recommendations/requirements for engagement centers. He suggested that the PIHP develop an outline of the engagement center model.

Motion by T. Waldecker, supported by J. Lapham, to approve PA2 funding recommendations for SUD services, and recommend block grant funding for identified providers to CMHPSM Regional Board
Motion carried

6. New Business

a. Livingston CMH – request for PA2 funds

-) Mini-Grant Management
 - o M. Scalera would like to consider setting caps on mini-grants per county.
-) Anti-Stigma Reduction Training
 - o K. Postmus gave an overview of the Livingston HSC proposal.
 - o The group does have a reserve of funds that will be able to fund the rest of the training (that PIHP isn't funding).
 - o This request falls within Marci's purview, no vote needed. The information was presented for informational purposes.
-) Reality Tour
 - o M. Scalera recommended funding for this evidence-based program.
 - o K. Postmus noted that this program addresses a specific request that came from Livingston schools.
 - o M. Scalera will request a 6-month report with data

Motion by T. Waldecker, supported by J. Lapham, to approve funding for the Reality Tour program
Motion carried

b. Provider Dashboard

-) M. Scalera presented the dashboard.
-) Data in the report was not clean. The wrong report was pulled. An updated, corrected dashboard will come back to OPB.
-) The dashboard currently doesn't include data re: criminal justice system.
-) B. LaFuente requested trends on the dashboard.

7. Report from Regional Board

-) M. Scalera shared a presentation that was given to the regional board this month.
-) The SUD presentations always prompt extensive discussions at Regional Board.

8. SUD Director Report

-) M. Scalera reported on the 4 grants the PIHP were recently awarded, which total \$662,801.
-) Synar Update
 - o K. Postmus reported that the region just finished out the Synar period. We had our 2nd best year, with only 2 attempted sales.

Motion by T. Waldecker, supported by J. Lapham, to cancel the August OPB meeting
Motion carried

9. Adjourn

Motion by C. Coleman, supported by D. McCormick, to adjourn the meeting
Motion carried

-) Meeting adjourned at 11:23 a.m.

Community Mental Health Partnership Of Southeast Michigan
SUD SUMMARY OF REVENUE AND EXPENSE BY FUND
 July 2017 FYTD

Summary Of Revenue & Expense	Funding Source					Total Funding Sources
	Medicaid	Healthy Michigan	SUD - Block Grant	SUD-COBO/PA2	Other	
Revenues						
Funding From MDCH	\$ 1,155,344	\$ 2,677,378	\$ 3,562,344		\$ -	\$ 7,395,066
PA2/COBO Tax Funding	\$ -	\$ -	\$ -	\$ 1,332,581	\$ -	\$ 1,332,581
Other	\$ -	\$ -	\$ -	\$ -	\$ -	\$ -
Total Revenues	<u>\$ 1,155,344</u>	<u>\$ 2,677,378</u>	<u>\$ 3,562,344</u>	<u>\$ 1,332,581</u>	<u>\$ -</u>	<u>\$ 8,727,647</u>
Expenses						
<u>Funding for County SUD Programs</u>						
Lenawee	\$ 235,389	\$ 466,983	\$ 257,423	\$ 152,463	\$ -	\$ 1,112,258
Livingston	\$ 171,290	\$ 316,210	\$ 667,032	\$ 154,483	\$ -	\$ 1,309,015
Monroe	\$ 155,599	\$ 353,849	\$ 558,736	\$ 127,169	\$ -	\$ 1,195,353
Washtenaw	\$ 751,688	\$ 1,746,465	\$ 1,491,292	\$ 410,393	\$ -	\$ 4,399,838
Total SUD Expenses	<u>\$ 1,313,965</u>	<u>\$ 2,883,507</u>	<u>\$ 2,974,483</u>	<u>\$ 844,508</u>	<u>\$ -</u>	<u>\$ 8,016,464</u>
<u>Other Operating Costs</u>						
SUD Use Tax	\$ 69,090	\$ 160,107	\$ -	\$ -	\$ -	\$ 229,197
SUD HICA Claims Tax	\$ 8,665	\$ 20,080	\$ -	\$ -	\$ -	\$ 28,745
Total Operating Costs	<u>\$ 77,755</u>	<u>\$ 180,187</u>	<u>\$ -</u>	<u>\$ -</u>	<u>\$ -</u>	<u>\$ 257,942</u>
Administrative Cost Allocation	<u>\$ 82,139</u>	<u>\$ 180,284</u>	<u>\$ 228,877</u>	<u>\$ -</u>	<u>\$ -</u>	<u>\$ 491,300</u>
Total Expenses	<u>\$ 1,473,859</u>	<u>\$ 3,243,978</u>	<u>\$ 3,203,360</u>	<u>\$ 844,508</u>	<u>\$ -</u>	<u>\$ 8,765,706</u>
Revenues Over/(Under) Expenses	\$ (318,516)	\$ (566,600)	\$ 358,984	\$ 488,073	\$ -	\$ (38,059)

PA2 by County	Revenues	Expenditures	Revenues Over/(Under) Expenses
	Lenawee	\$ 99,638	\$ 152,463
Livingston	\$ 301,504	\$ 154,483	\$ 147,021
Monroe	\$ 217,238	\$ 127,169	\$ 90,069
Washtenaw	\$ 714,201	\$ 410,393	\$ 303,808
Totals	<u>\$ 1,332,581</u>	<u>\$ 844,508</u>	<u>\$ 488,073</u>

Unallocated PA2	
Lenawee	\$ 1,078,205
Livingston	\$ 2,729,734
Monroe	\$ 708,058
Washtenaw	\$ 2,663,366
Total	<u>\$ 7,179,363</u>

CMHPSM SUD OVERSIGHT POLICY BOARD

ACTION REQUEST

Board Meeting Date: September 28, 2017

Action Requested:

Approve final PA2 funding recommendations Round 3 Awards for SUD specialty Services RFP.

Background:

RFP prevention and specialty services (treatment and prevention) round three proposals that may have been scored under the 80% threshold. Staff have reviewed these two proposals from the perspective of need and availability of funds. Both providers are supporting Washtenaw County initiatives and are in alignment with specific goals for SUD services and programming and are within the original planned fund availability. Further communication with the state revealed additional PA2 funds were released, block grant funds were awarded to adjust for service needs and the state Medicaid and Healthy Michigan rates were increased significantly for SUD services to meet the demand. This has continued to allow for a “cushion” in our PA2 funds moving forward.

Washtenaw Community Mental Health 24/7 Crisis stabilization team serves as the access point for Mental Health and Co-occurring individuals in the county. With the opioid epidemic, they have been serving a disproportionate number of co-occurring individuals with opiate disorders. While there is collaboration with SUD Providers, the follow along services has been difficult. The original proposal of \$385,787 had 5 FTE staff which was beyond available funds. However, the budget and program has subsequently been re-worked to have 2.0 FTE staff/peers with SUD experience added to the Crisis team. This will allow for more coordination, support and follow-along services for this special population. The budget request is for **\$97,683.26**. The score on the original proposal was **78.8**.

The Washtenaw Health Initiative proposal requests funding for the Opiate Project Coalition Coordinator. This organization has been providing in kind support for the past four years. However, the project impact and workgroup continues to grow, the need to have a dedicated coordinator to ensure the work is supported by staff. This is aligned with our strategic plan to have opiate workgroups/coalitions in each county. We have supported a position in Livingston, Lenawee and Monroe in the past. The proposed budget for a .5 FTE dedicated coordinator and material supports is **\$47,989**. The score on this proposal was **73.9**.

Recommendations:

Approval of the PA2 Special Initiatives RFP Awards to Washtenaw County Community Mental Health for \$97,683.26 and Washtenaw Health Initiative Opioid Project Coordinator for \$47,989

Community Mental Health Partnership of Southeast Michigan/PIHP	Policy and Procedure
Department: Substance Use Disorder services Author: Marci Scalera	PA 2 Procurement Policy Local Policy Number (if used)
Approval Date November 13, 2014 by Oversight Policy Board	Implementation Date November 14, 2014

I. PURPOSE

To establish a process for obtaining services related to substance use disorder (SUD) prevention and treatment on behalf of the SUD Oversight Policy Board using PA 2 funds.

II. REVISION HISTORY

DATE	REV. NO.	MODIFICATION
9-28-17	1	

III. APPLICATION

This policy applies to members of the CMHPSM SUD Oversight Policy Board, CMHPSM staff; potential providers and vendors of goods and services that support the provision of SUD services within the four-county region (Lenawee, Livingston, Monroe and Washtenaw Counties).

IV. POLICY

Use of PA2 funds within the CMHPSM region shall be authorized by the SUD Oversight Policy Board utilizing the standards outlined in this policy.

V. DEFINITIONS

PA2 Funds: If the sum of a county’s operating property tax levy for the ensuing fiscal year plus the county’s distribution to be received pursuant to section 10 of the state convention facility development act exceeds the product of the county’s state equalized value for the ensuing fiscal year times the greater of the county’s base tax rate or prior years’ operating millage rate, then an amount equal to the lesser of 50% of the excess of 50% of the state convention facility development act distribution shall be used for substance treatment programs within the county. The proceeds received by the taxing unit shall be distributed to the coordinating agency designated for that county pursuant to section 6226 of Act No. 368 of the Public Acts of 1978, being section 333.6226 of the Michigan Compiled Laws, to be used for substance abuse prevention and treatment programs in the county from which the proceeds originated.

Competitive Procurement: Methods utilized by a funder to assure quality, transparency, efficiency, cost-effectiveness and competitive fairness when awarding funding related to a single entity or limited group of entities. Examples of competitive procurement include: requests for proposals (RFPs), requests for information (RFIs), requests for quotes

(RFQs) or bids. The particular method utilized is based upon the nature of the good, service or work being requested by the PIHP.

Mini-Grants: A specific amount of funds per county set aside annually for small initiatives that arise during the fiscal year in the amount not to exceed \$1000.

VI. STANDARDS

- A. PIHP region wide allocated PA2 funds may be expended locally in one of the partner counties or regionally across the partner counties by the PIHP for the following purposes:
1. Supplemental support for services provided by the SUD Treatment service provider network (ROSC Core Providers, SUD Treatment sub-contractors, other SUD service providers) or evidence based practices provided by the Substance Abuse Prevention provider network.
 2. Support for new programming and pilots that are community and recovery focused.
 3. Training for local or regional initiatives that include enhancement of skills and knowledge base for staff and/or community.
 4. Small, targeted efforts for specific SUD related initiatives or events, such as overdose prevention; local coalition building and activities; recovery events, etc.
 5. Other substance use disorder treatment or substance abuse prevention initiatives approved by the SUD Oversight Policy Board.
- B. PA2 funding may be expended by the PIHP to supplement service budgets within the regional SUD Treatment and/or Substance Abuse Prevention provider networks without prior approval from the SUD Oversight Policy Board. Funding shall be identified and an accounting of such expenditures must be reported to the SUD Oversight Policy Board.
- C. PA2 funding requests from all entities for new programming, program pilots, local or regional initiatives, or any other SUD treatment or prevention programs shall follow these guidelines:
1. Entities or individuals requesting PA2 funding from the PIHP must utilize the CMHPSM Request for PA2 funding application.
 - a. Requests by entities for PA2 mini grant funding of less than \$1,000.00 may be approved by the ~~Managing Director~~Chief Executive Officer or the Director of Clinical and SUD Service. Any such funding shall be identified and an accounting of such expenditures must be reported to the SUD Oversight Policy Board.
 - b. Requests by entities for PA2 funding of more than \$1,000.01 must be approved by the SUD Oversight Policy Board.
- D. If the PIHP identifies a SUD Treatment or SA Prevention initiative, with funding which will exceed \$10,000.00, a competitive procurement method will be utilized, unless a waiver is granted by the PIHP ~~Managing Director~~Chief Executive Officer~~Director~~.
1. The PIHP will issue an RFP, RFI or RFQ to determine the recommended awardee or awardees and/or the relevant funding amount or amounts.
 2. A waiver of the competitive procurement method may be granted by the PIHP ~~Managing Director~~Chief Executive Officer for one of the following reasons:
 - a. The item or service is available only from a single source
 - b. There is a public exigency or emergency, and the urgency for obtaining the item or service does not permit competitive procurement
 - c. The item or service is of limited quantity or duration;
 - d. The item or service is unique;

- e. Pilot projects where efficacy and effectiveness are still being evaluated
- f. —A critical volume of services is necessary to provide the required service at the -specified price;
- g. Continuity of care or continuation of existing service programming.

3. The SUD Oversight Policy Board must approve of any and all funding in which the PIHP ~~Managing Director~~Chief Executive Officer has granted a waiver for competitive procurement.

E. PA2 funds **must not** be expended on PIHP/"Coordinating Agency" administrative expenses.

F. PA2 funds shall be expended on programs and services within the county of origin, unless the SUD Oversight Policy Board determines to combine any PA2 funding to support a region wide initiative.

VII. EXHIBITS

None

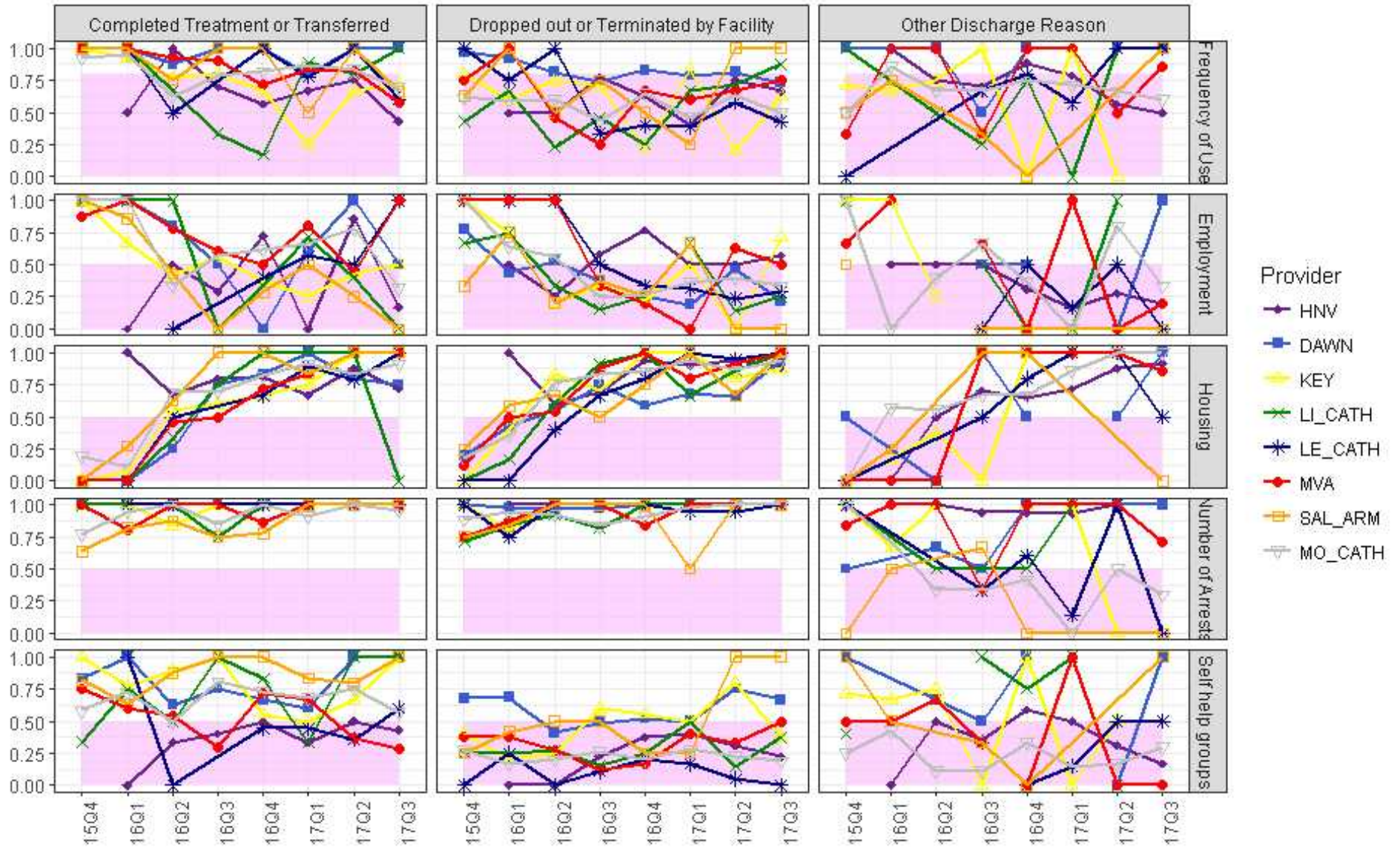
VIII. REFERENCES

Reference:	Check if applies:	Standard Numbers:
42 CFR Parts 400 et al. (Balanced Budget Act)	x	
45 CFR Parts 160 & 164 (HIPAA)		
42 CFR Part 2 (Substance Abuse)		
Michigan Mental Health Code Act 258 of 1974		
The Joint Commission - Behavioral Health Standards		
Michigan Department of Community Health (MDCH) Medicaid Contract		
MDCH PIHP Contract		
Michigan Medicaid Provider Manual		
PIHP Policy Review Schedule	X	
Policy Tracking Form		

DRAFT

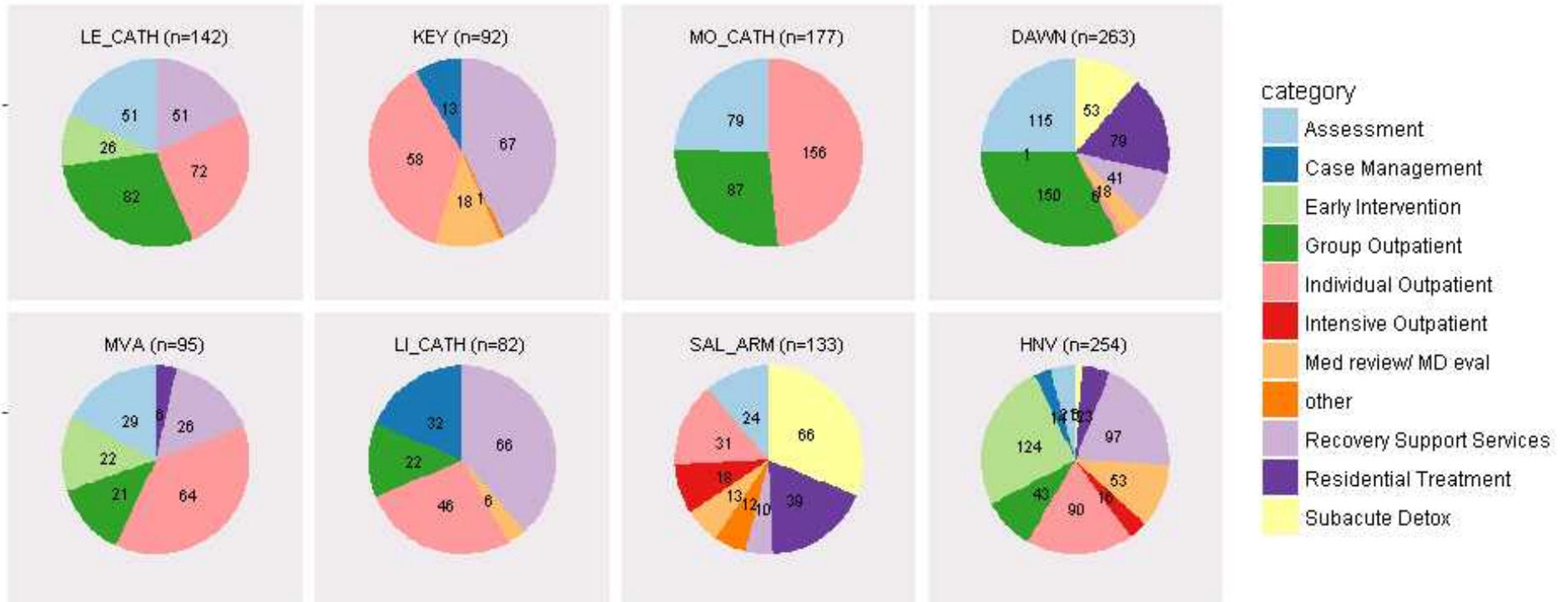
SUD Outcomes Dashboard

NOMS Outcomes



DRAFT

Service Array



DRAFT

