

# PREVENTION THEATRE COLLECTIVE

## 2020-21

engage@emu

## PREVENTION THEATRE COLLECTIVE

"PTC"

IS AN APPLIED THEATRE-BASED PEER TO PEER OUTREACH THAT UTILIZES INTERACTIVE THEATRE TECHNIQUES AS A TOOL TO CULTIVATE A CULTURE OF AWARENESS, IN AND AROUND THE RELATIONSHIP BETWEEN MENTAL HEALTH AND SUBSTANCE ABUSE. PTC USES BOTVIN CURRICULUM TO GUIDE DISCUSSIONS AND STUDENT WRITTEN MONOLOGUES AND/OR SKITS FOR PEER-TO-PEER AND COMMUNITY PERFORMANCE AND DIALOGUE.

### PTC SERVED 86 STUDENT PARTICIPANTS

PTC was able to open the opportunity to participate in programming to all Washtenaw County students due to the mode of virtual remote learning. PTC's effort was offered as an open enrollment course, to offer all Washtenaw County students the opportunity to earn free three (3) transferable college credits. 86 Students were exposed to Botvin Transitions curriculum. 33 of 86 students decided to continue to earn the transferable college credits.

### DRUG REFUSAL

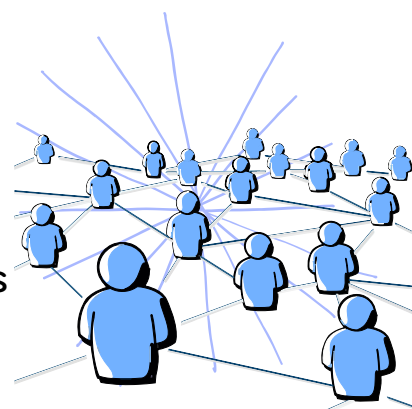
92% of student participants exposed to the Botvin Curriculum demonstrated more frequent use of drug refusal skills.

### INCREASED KNOWLEDGE

69% of student participants scored a 16+ score in the Botvin knowledge section! 40% of participants showed a 1-point or more score increase in comparison to their individual pre-test scores in the Botvin knowledge section.

### SOCIAL CONNECTEDNESS

34% of student participants self reported that they feel a higher & positive social connectedness to their fellow peers and that their voices are being heard on issues in and around ATOD, Substance Ab/use and mental health issues



#### KEY STAFF

- ARIEL POMPEY
- AMBER HORWITZ
- ROBBIE STAPLETON
- HANANIAH WIGGINS
- DAKOTAH MYERS
- BRITNEY WINN
- JESSICA ALEXANDER